



Grand Regent Tower, Cadmium Square, London, E2 0FG

£400 Per Week

A superb 1 bedroom canal side apartment for rent offering bright and spacious accommodation throughout.

Open plan living room with luxury fitted kitchen, access to terrace with views of the canal, good size bedroom and luxury bathroom suite.

Located minutes from Mile End tube station.

PART FURNISHED ONLY WITH A SOFA

PROPERTY AVAILABLE FROM 31.03.2024

- Grand Regent Tower E2
- Canal views from Terrace
- Comes part furnished only (with a sofa)
- High quality fixtures & fittings
- Close to Mile End Tube Station
- Available From 31.03.2025
- 1 Bedroom Apartment

Grand Regent Tower, Cadmium Square, London, E2 0FG



GRAND REGENT CANAL



VIEW OF DEVELOPMENT



ENTRANCE



KITCHEN



GRAND REGENT TOWER



RECEPTION ROOM

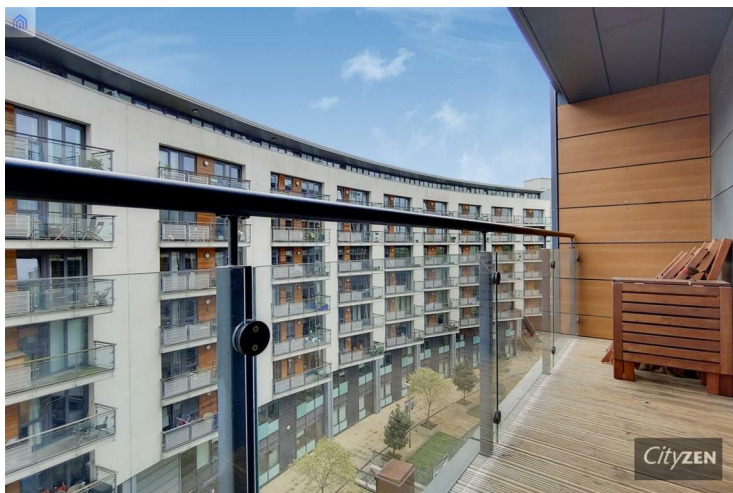
Grand Regent Tower, Cadmium Square, London, E2 0FG



RECEPTION ROOM VIEW



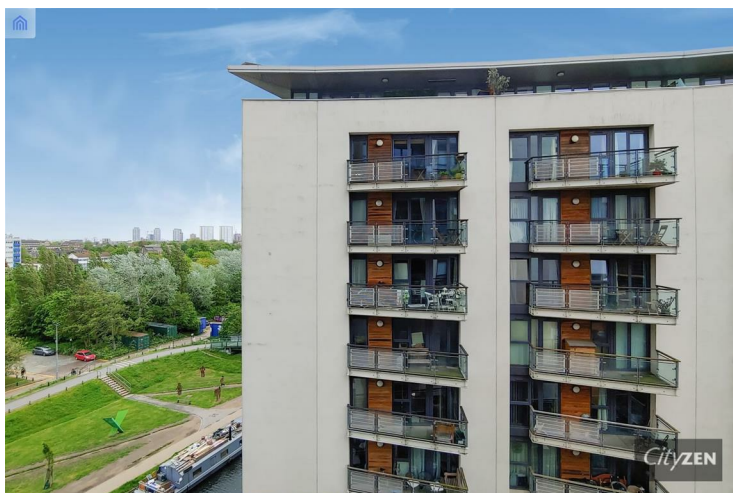
BEDROOM VIEW



TERRACE



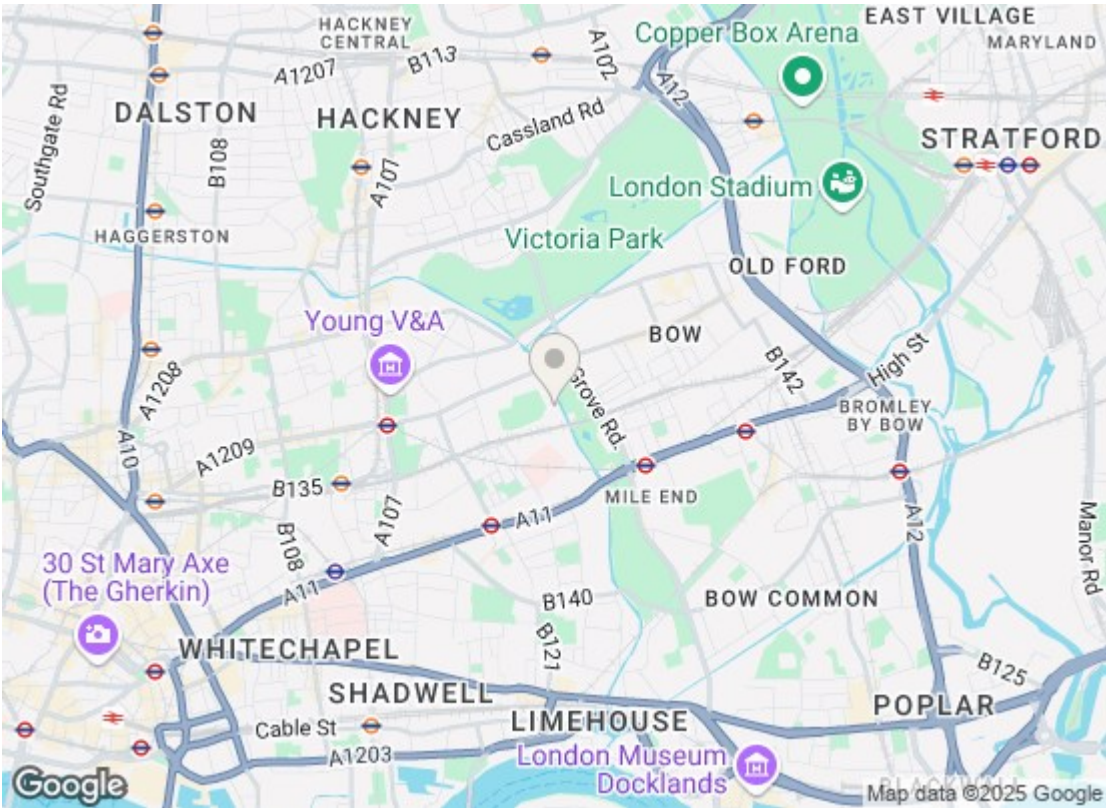
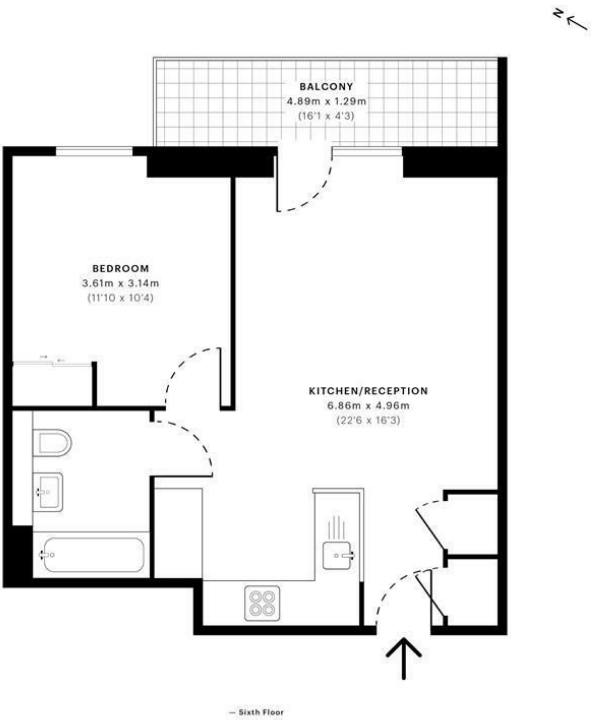
BEDROOM



VIEW FROM TERRACE



BATHROOM



Energy Efficiency Rating		
	Current	Potential
Very energy efficient - lower running costs		
(92 plus) A		
(81-91) B	82	82
(69-80) C		
(55-68) D		
(39-54) E		
(21-38) F		
(1-20) G		
Not energy efficient - higher running costs		
England & Wales		EU Directive 2002/91/EC
Environmental Impact (CO ₂) Rating		
	Current	Potential
Very environmentally friendly - lower CO ₂ emissions		
(92 plus) A		
(81-91) B		
(69-80) C		
(55-68) D		
(39-54) E		
(21-38) F		
(1-20) G		
Not environmentally friendly - higher CO ₂ emissions		
England & Wales		EU Directive 2002/91/EC

We have prepared these property particulars as a general guide to a broad description of the property. They are not intended to constitute part of an offer or contract. We have not carried out a structural survey and the services, appliances and specific fittings have not been tested. All photographs, measurements, floorplans and distances referred to are given as a guide only and should not be relied upon for the purchase of carpets or any other fixtures or fittings. Lease details, service charges and ground rent (where applicable) and council tax are given as a guide only and should be checked and confirmed by your Solicitor prior to exchange of contracts.